



# Kid's Corner



## St Georges Day -

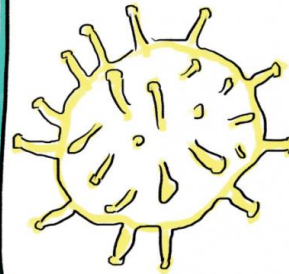
## England's Day 23rd April



St. George is the patron saint of England. His emblem, a red cross on a white background, is the flag of England, and part of the British flag. St George's emblem was adopted by Richard The Lion Heart and brought to England in the 12th century. The king's soldiers wore it on their tunics to avoid confusion in battle.

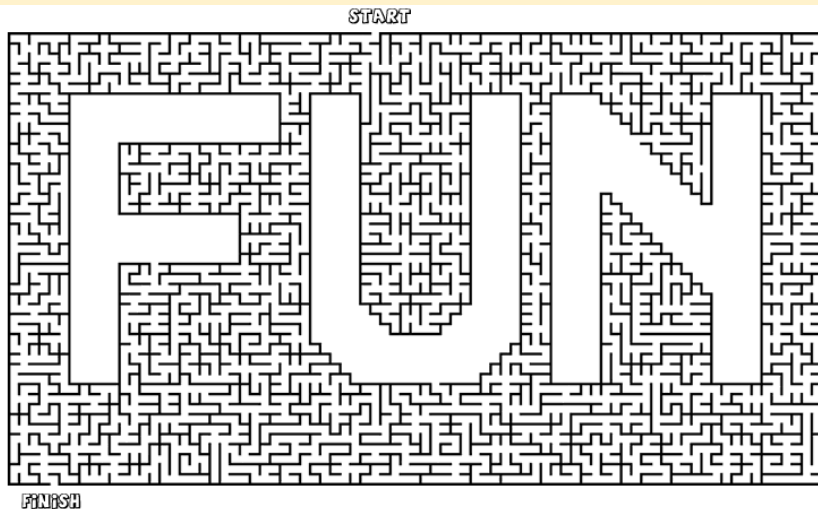
## Why is it called Coronavirus?

### Coronavirus Facts



- "Corona" is Latin for crown.
- Under a microscope these viruses look like a crown with spikes ending in little blobs.

Can you find your way out of this maze?



Hint: you could always zoom in on the screen

Good luck

Mr Bartram

## Home learning

When you work at home, try to find a quiet space to concentrate. Shut out all distractions and enjoy your learning.

Listen to your parents and be patient in your understanding. Older brothers and sisters can be helpful too!

We are always learning new things and now is an important time to continue that whilst at home.

Please share all your wonderful creations and new knowledge gained with your teachers through Class Dojo.

Nobody's  
**PERFECT**,  
that's why  
**PENCILS**  
have  
**ERASERS!**